



Main characteristics

Measuring range	-1 ... 0 bar up to 0 ... 200 bar
Long term stability	≤ 0.3% FS / Year
Accuracy (20 °C) <small>(linearity, hysteresis and repeatability according Best Fit Straight Line)</small>	≤ ± 0.5% FS (BFSL)

Technical specifications

Measuring principle	Thick film on ceramic
Measuring ranges	-1 ... 0 bar up to 0 ... 200 bar
Type of pressure	Relative
Accuracy (20 °C) <small>(linearity, hysteresis and repeatability according Best Fit Straight Line)</small>	≤ ± 0.5% FS (BFSL)
Error of zero point	≤ ± 1% FS
Error of span	≤ ± 1% FS
Zero thermal drift	≤ ± 0.25% FS/10 K
Span thermal drift	≤ ± 0.15% FS/10 K
Long term stability	≤ 0.3% FS / Year
Response time (10 ... 90%)	≤ 3 ms
Process connections	See page 3

Environment

Temperature	
Storage	-40 ... + 85°C
Compensated range	-10 ... + 55°C
Medium	
NBR	-40 ... + 100°C
EPDM	-40 ... + 100°C
FKM (Viton®)	-25 ... + 100°C
Ambient	
NBR	-40 ... + 85°C
EPDM	-40 ... + 85°C
FKM (Viton®)	-20 ... + 85°C

Main features

- OEM applications
- Excellent price/performance ratio
- Stainless Steel or brass construction
- Compact design

Applications

- Pneumatic
- HVAC
- Factory automation
- Energy
- Agriculture vehicles

Protection rating	IP65 (EN 60529) up to IP67 depending on electrical connection
Vibration IEC60068-2-6	1.5 mm p-p (10 – 55 Hz), 10 g (55 Hz – 2 KHz) 10 cycles within 2.5 h per axis
Shock IEC60068-2-27	50 g/11 ms 100 g/6 ms 3 x Imp. per axis and direction
Bump IEC60068-2-27	100 g/2 ms 4000 x Imp. per Axis and direction
Random IEC60068-2-64	0.1 g ² /Hz (10g RHS)

Electrical specification

Output signal / Power supply	4 ... 20 mA / 11 ... 30 VDC 0 ... 10 V / 15 ... 30 VDC 1 ... 5 V / 11 ... 30 VDC 0.5 ... 4.5 V / 5 VDC ratiometric
Load impedance	
Current output	$R_{\Omega} = (U_{\text{supply}} - 11 \text{ V}) / 20 \text{ mA}$
Voltage output	> 5 KΩ
Insulation resistance	>100 MΩ at 250 VDC
Electrical connections	See page 3

Material

Process connection	Brass (CTL) or SS 1.4404 AISI 316L (CTX)
Housing	Brass (CTL) or SS 1.4301 AISI 304 (CTX)
Diaphragm	Ceramic (96% Al ₂ O ₃)
Sealing	NBR, CR, EPDM, FKM (Viton®)

Approvals

CE conformity	Directive 2004/108/CE in accordance with EN 61000-6-2, EN 61000-6-3, EN 61326-1 (Tab.2) Pressure directive 97/23/CE
---------------	--

Measuring ranges and overpressure safety

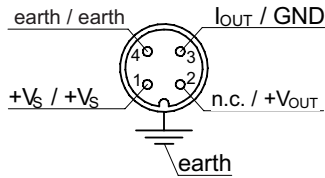
Pressure in bar							
Pressure range	-1 ... 0 0 ... 1	-1 ... 1.5 0 ... 2.5	-1 ... 3 0 ... 4	-1 ... 5 0 ... 6	-1 ... 9 0 ... 10	-1 ... 15 0 ... 16	-1 ... 24 0 ... 25
Over pressure	2	4	8	12	20	32	50
Burst pressure	3	7	12	18	30	48	75

Pressure in bar					
Pressure range	-1 ... 39 0 ... 40	0 ... 60	0 ... 100	0 ... 160	0 ... 200
Over pressure	80	120	200	320	360
Burst pressure	120	180	300	480	480

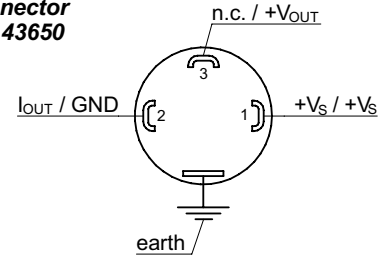
Electrical connections

Signal at 4...20 mA / Signal at 0...10V

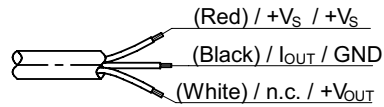
M12 4-pins



Connector DIN 43650

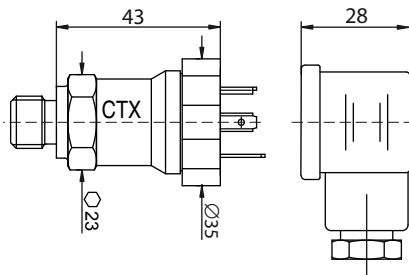


Cable output

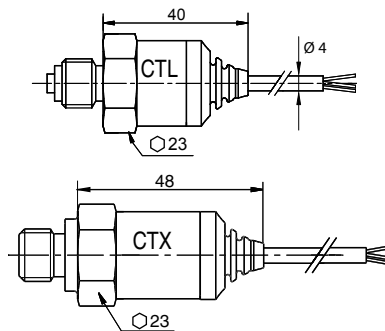


Dimensions (mm)

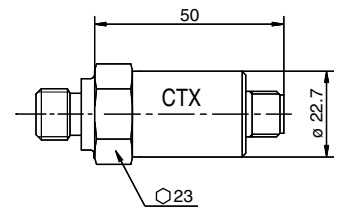
DIN 43650 connector IP65



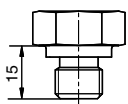
Cable outlet IP65



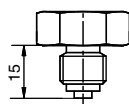
M12 4 pins, IP65



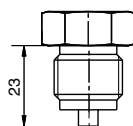
Hydraulic connections



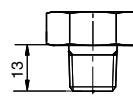
G 1/4 DIN 3852-E



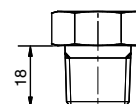
G 1/4 EN837



G 1/2 EN837



1/4 NPT



1/2 NPT

Ordering details CTX-CTL

CT	x	.	x	.	x	.	x	.	xxx	.	x
----	---	---	---	---	---	---	---	---	-----	---	---

Model

Pressure transmitter

CT

Model type

Brass version

L

Stainless steel version

X

Output signal

4 ... 20 mA

3

0 ... 10 V

2

1 ... 5 V

4

0.5 ... 4.5 V (ratiometric)

7

Process connection

G $\frac{1}{4}$ DIN 3852

In combination with stainless steel version (CTX)

B

G $\frac{1}{4}$ EN 837

2

G $\frac{1}{2}$ EN 837

In combination with stainless steel version (CTX)

3

$\frac{1}{4}$ NPT

5

$\frac{1}{2}$ NPT

6

Sealing

NBR

3

CR

4

EPDM

5

FKM (Viton®)

9

Pressure range and unit in bar

0...-1

B59

-1...0.6

B72

-1...1.5

B74

-1...3

B76

-1...5

B77

-1...9

B79

-1...15

B81

-1...24

B82

-1...39

B1L

0...1

B15

0...2.5

B18

0...4

B19

0...6

B20

0...10

B22

0...16

B24

0...25

B26

0...40

B27

0...60

In combination with stainless steel version (CTX)

B29

0...100

In combination with stainless steel version (CTX)

B31

0...160

In combination with stainless steel version (CTX)

B33

0...200

In combination with stainless steel version (CTX)

B34

Output connection

M12, 4 pins

In combination with stainless steel version (CTX)

A

DIN 43650, 4 pins

In combination with stainless steel version (CTX)

0

Cable (1 m)

1

Cable (2 m)

2

Cable (5 m)

5